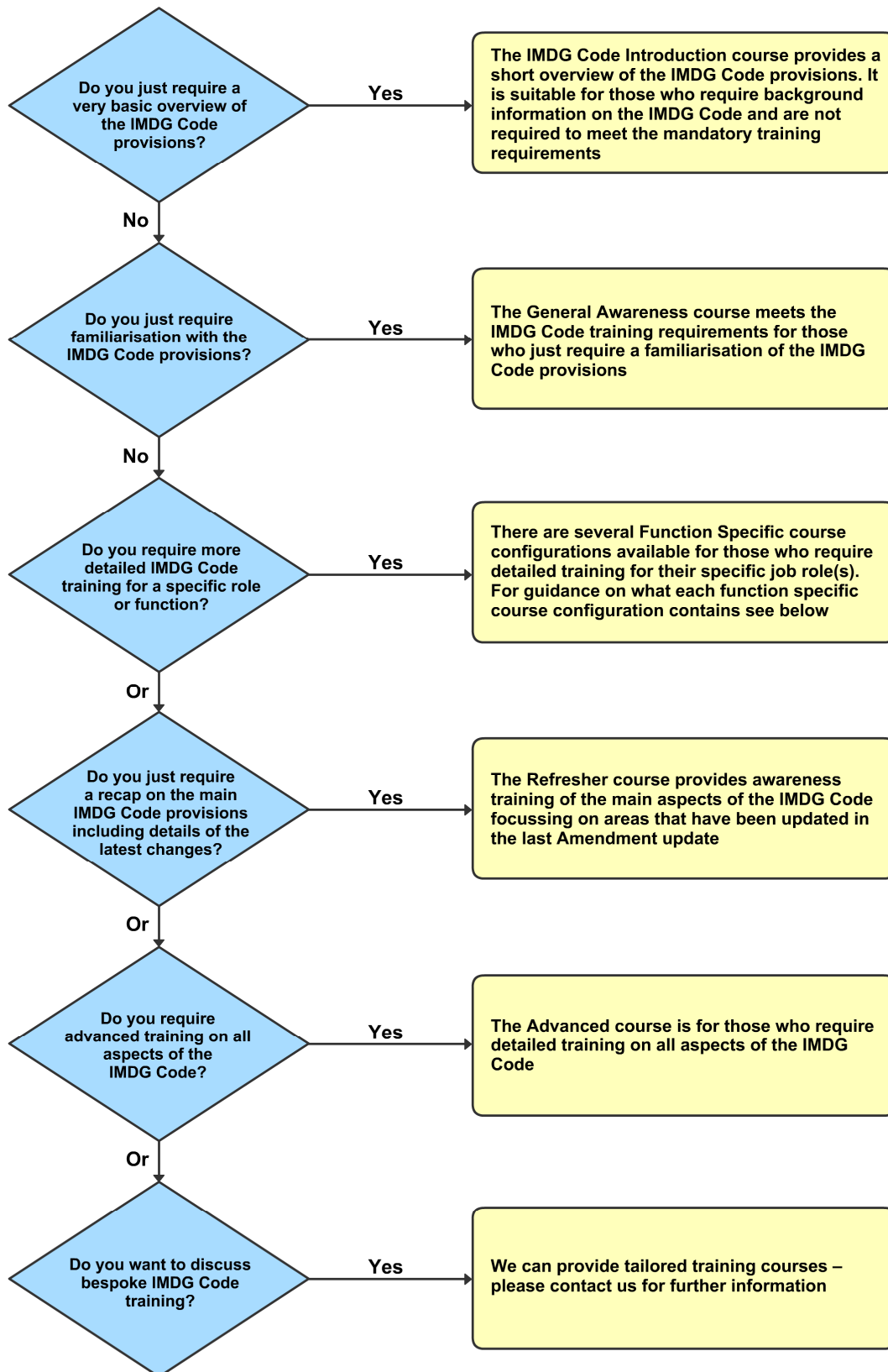


What level of IMDG Code training is right for my organization?

This flow chart provides guidance on the different levels of IMDG Code e-learning courses available. If you require any further information please contact us at imdge-learning@existec.com



**Guidance on the IMDG Code Function-Specific Training courses
provided by Exis Technologies.**

The IMDG Code requires that shore-based personnel engaged in the transport of dangerous goods intended to be transported by sea must be trained in the contents of dangerous goods provisions in line with their responsibilities.

An organisation must determine who must be trained, what levels of training they require and the training methods used to enable them to comply with the IMDG Code provisions.

The IMDG Code identifies the following shore-based personnel:

- classify dangerous goods and identify Proper Shipping Names of dangerous goods;
- pack dangerous goods;
- mark, label or placard dangerous goods;
- load/unload Cargo Transport Units;
- prepare transport documents for dangerous goods;
- offer dangerous goods for transport;
- accept dangerous goods for transport;
- handle dangerous goods in transport;
- prepare dangerous goods loading/stowage plans;
- load/unload dangerous goods into/from ships;
- carry dangerous goods in transport

These personnel must be trained in order to be familiar with the general provisions of the IMDG Code and this must include training on the different classes of dangerous goods; labelling, marking, placarding, stowage, segregation, transport documentation and emergency response.

In addition function-specific training is also required for those personnel who have a specific role (or roles) in the transport of dangerous goods.

Guidance is provided for function-specific training for those shore-based personnel mentioned above in tables 1.3.1.5 and 1.3.1.6 of the IMDG Code. The function-specific training provided by Exis Technologies is based on this guidance.

Table 1.3.1.5 is reproduced below with an additional column outlining what is covered in each of the function-specific course configurations available.

Function code & title	Training guidance as listed in table 1.3.1.5 of the IMDG Code	What's covered in this training configuration?
Function 1: Classify dangerous goods and identify Proper Shipping Name	<ul style="list-style-type: none"> • Classification requirements, in particular <ul style="list-style-type: none"> • the structure of the description of substances • the classes of dangerous goods and the principles of their classification • the nature of the dangerous substances and articles transported (their physical, chemical and toxicological properties) • the procedure for classifying solutions and mixtures • identification by Proper Shipping Name • use of Dangerous Goods List 	<ul style="list-style-type: none"> • General provisions, training and security provisions • Detailed classification elements including the nine hazard classes, packing groups, precedence of hazard, marine pollutants, samples and wastes, classification provisions in the DGL • Overview on competent authority approvals and exemptions • General awareness overview on marking, labelling, placarding and transport documentation provisions • An introduction to packaging provisions • An introduction to transporting dangerous goods including stowage, segregation and emergency response provisions

Function code & title	Training guidance as listed in table 1.3.1.5 of the IMDG Code	What's covered in this training configuration?
Function 2: Pack dangerous goods	<ul style="list-style-type: none"> • Classes Packaging requirements <ul style="list-style-type: none"> • type of packages (IBC, large packaging, tank container and bulk container) • UN marking for approved packagings • segregation requirements • limited quantities and excepted quantities • Marking and labelling • First aid measures • Emergency response procedures • Safe handling procedures 	<ul style="list-style-type: none"> • General provisions, training and security provisions • Overview of classification provisions including the nine hazard classes • Detailed element on marking and labelling of packages • Overview on placarding and marking provisions for CTUs and transport documentation • Standard element on limited and excepted quantity provision • Detailed elements on types on conventional packagings and types of bulk packagings, UN performance testing of packagings, UN approval marking of packagings, Provisions for portable tanks MEGCs, road tank vehicles and bulk containers, Use of packagings, portable tanks and bulk containers, packaging provisions in the DGL • General overview on stowage provisions • Detailed segregation provisions • Overview on emergency response requirements and medical first aid guide • Standard elements on the packing and use of CTUs
Function 3: Mark, label or placard dangerous goods	<ul style="list-style-type: none"> • Classes • Marking, labelling and placarding requirements <ul style="list-style-type: none"> • primary and subsidiary risk labels • marine pollutants • limited quantities and excepted quantities 	<ul style="list-style-type: none"> • General provisions, training and security provisions • Overview of classification provisions including the nine hazard classes • Detailed element on the marking and labelling of packages • Detailed element on the placarding and marking of CTUs • Standard element on transport documentation • Standard element on limited and excepted quantity provision • An introduction to packaging provisions • Overview on stowage and segregation provisions • Overview on emergency response requirements and medical first aid guide

Function code & title	Training guidance as listed in table 1.3.1.5 of the IMDG Code	What's covered in this training configuration?
Function 4: Load/unload cargo transport units	<ul style="list-style-type: none"> • Documentation • Classes • Marking, labelling and placarding • Stowage requirements, where applicable • Segregation requirements • Cargo securing requirements (as contained in the IMO/ILO/UN ECE guidelines) • Emergency response procedures • First aid measures • CSC requirements • Safe handling procedures 	<ul style="list-style-type: none"> • General provisions, training and security provisions • Overview of classification provisions including the nine hazard classes • Detailed element on the marking and labelling of packages • Detailed element on the placarding and marking of CTUs • Detailed element on transport documentation • Overview of limited and excepted quantity provisions • Overview of packaging types and provisions • Overview of stowage provisions • Detailed element on general segregation provisions • Standard elements on emergency response and the medical first aid guide • Standard elements of the use and packing of CTUs and the International Convention for Safe Containers
Function 5: Prepare transport documents for dangerous goods	<ul style="list-style-type: none"> • Documentation requirements <ul style="list-style-type: none"> • transport document • container/vehicle packing certificate • competent authorities' approval • waste transport documentation • special documentation, where appropriate 	<ul style="list-style-type: none"> • General provisions, training and security provisions • Overview of classification provisions including the nine hazard classes • Overview on competent authority approvals and exemptions • Overview on labelling, marking and placarding • Detailed element on transport documentation including dangerous goods note and container packing certificate • Overview on limited and excepted quantity provisions • Introduction to packaging provisions • Overview elements on stowage, segregation and emergency response

Function code & title	Training guidance as listed in table 1.3.1.5 of the IMDG Code	What's covered in this training configuration?
<p>Function 6: Offer dangerous goods for transport</p>	<ul style="list-style-type: none"> • Thorough knowledge of the IMDG Code • Local requirements at loading and discharge ports <ul style="list-style-type: none"> • port byelaws • national transport regulations 	<ul style="list-style-type: none"> • General provisions, training and security provisions • Detailed classification elements including the nine hazard classes, packing groups, precedence of hazard, marine pollutants, samples and wastes, classification provisions in the DGL • Overview on competent authority approvals and exemptions • Detailed element on the marking and labelling of packages • Detailed element on the placarding and marking of CTUs • Detailed element on transport documentation including dangerous goods note and container packing certificate • Detailed elements on stowage and segregation both generally and on a ship specific basis • Standard elements on fire precautions, emergency response and the medical first aid guide • Standard elements of the use and packing of CTUs, the International Convention for Safe Containers and dangerous goods in port areas
<p>Function 7: Accept dangerous goods for transport</p>	<ul style="list-style-type: none"> • Thorough knowledge of the IMDG Code • Local requirements at loading, transiting and discharge ports <ul style="list-style-type: none"> • port byelaws, in particular quantity limitations • national transport regulations 	<ul style="list-style-type: none"> • General provisions, training and security provisions • Detailed classification elements including the nine hazard classes, packing groups, precedence of hazard, marine pollutants, samples and wastes, classification provisions in the DGL • Overview on competent authority approvals and exemptions • Detailed element on the marking and labelling of packages • Detailed element on the placarding and marking of CTUs • Detailed element on transport documentation including dangerous goods note and container packing certificate • Detailed elements on stowage and segregation both generally and on a ship specific basis • Standard elements on fire precautions, emergency response and the medical first aid guide • Standard elements of the use and packing of CTUs, the International Convention for Safe Containers and dangerous goods in port areas • Standard element on fire protection on bard ships

Function code & title	Training guidance as listed in table 1.3.1.5 of the IMDG Code	What's covered in this training configuration?
Function 8: Handle dangerous goods in transport	<ul style="list-style-type: none"> • Classes and their hazards • Marking, labelling and placarding • Emergency response procedures • First aid measures • Safe handling procedures such as <ul style="list-style-type: none"> • use of equipment • appropriate tools • safe working loads • CSC requirements, local requirements at loading, transit and discharge ports • Port byelaws, in particular, quantity limitation • National transport regulations 	<ul style="list-style-type: none"> • General provisions, training and security provisions • Overview of classification provisions including the nine hazard classes • Detailed element on the marking and labelling of packages • Detailed element on the placarding and marking of CTUs • Standard element on transport documentation • Overview on limited and excepted quantity provisions • Overview of packaging types and provisions • Overview of stowage and segregation provisions • Standard elements on emergency response and the medical first aid guide • Standard elements of the use and packing of CTUs, the International Convention for Safe Containers and dangerous goods in port areas
Function 9: Prepare dangerous goods loading/ stowage plans	<ul style="list-style-type: none"> • Documentation • Classes • Stowage requirements • Segregation requirements • Document of compliance • Relevant IMDG Code parts, local requirements at loading, transit and discharge ports • Port byelaws, in particular, quantity limitations 	<ul style="list-style-type: none"> • General provisions, training and security provisions • Overview of classification provisions including the nine hazard classes • Overview on competent authority approvals and exemptions • Overview on marking, labelling and placarding provisions • Detailed element on transport documentation including dangerous goods note, container packing certificate and dangerous goods manifest • Overview on limited and excepted quantity provisions • Overview of packaging types and provisions • Detailed elements on stowage and segregation both generally and on a ship specific basis • Standard elements on fire precautions, emergency response and the medical first aid guide • Standard elements of the use of CTUs and dangerous goods in port areas • Standard element on fire protection on board ships

Function code & title	Training guidance as listed in table 1.3.1.5 of the IMDG Code	What's covered in this training configuration?
Function 10: Load/unload dangerous goods into/ from ships.	<ul style="list-style-type: none"> • Classes and their hazards • Marking, labelling and placarding • Emergency response procedures • First aid measures • Safe handling procedures such as <ul style="list-style-type: none"> • use of equipment • appropriate tools • safe working loads • Cargo securing requirements • CSC requirements, local requirements at loading, transit and discharge ports • Port byelaws, in particular, quantity limitation • National transport regulations 	<ul style="list-style-type: none"> • General provisions, training and security provisions • Overview of classification provisions including the nine hazard classes • Overview on competent authority approvals and exemptions • Detailed element on the marking and labelling of packages • Detailed element on the placarding and marking of CTUs • Standard element on transport documentation • Overview on limited and excepted quantity provisions • Overview of packaging types and provisions • Detailed elements on stowage and segregation • Standard elements on fire precautions, emergency response and the medical first aid guide • Standard elements of the use and packing of CTUs, the International Convention for Safe Containers and dangerous goods in port areas
Function 11: Carry dangerous goods	<ul style="list-style-type: none"> • Documentation • Classes • Marking, labelling and placarding • Stowage requirements, where applicable • Segregation requirements • Local requirements at loading, transit and discharge ports <ul style="list-style-type: none"> • port byelaws, in particular, quantity limitations • national transport regulations • Cargo securing requirements (as contained in the IMO/ILO/UN ECE guidelines) • Emergency response procedures • First aid measures • CSC requirements • Safe handling procedures 	<ul style="list-style-type: none"> • General provisions, training and security provisions • Overview of classification provisions including the nine hazard classes • Overview on competent authority approvals and exemptions • Detailed element on the marking and labelling of packages • Detailed element on the placarding and marking of CTUs • Detailed element on transport documentation including dangerous goods note, container packing certificate and dangerous goods manifest • Overview on limited and excepted quantity provisions • Overview of packaging types and provisions • Detailed elements on stowage and segregation both generally and on a ship specific basis • Standard elements on fire precautions, emergency response and the medical first aid guide • Standard elements of the use and packing of CTUs, the International Convention for Safe Containers and dangerous goods in port areas • Standard element on fire protection on board ships

Taking more than one course configuration

These function-specific course configurations can be taken together. The e-learning system simply amalgamates the available elements and presents them at the most appropriate level. For example, someone who packs, documents and marks and labels packages may wish to take the following course configurations:

- Function 2: Pack dangerous goods
- Function 3: Mark, label or placard dangerous goods;
- Function 5: Prepare transport documents for dangerous goods;

In doing so, they will get the most detailed elements on packaging and packing CTUs, preparing transport documentation and marking, labelling and placarding packages and CTUs.

Note: If you wish to take more than 3 or 4 of the course configurations you may wish to consider taking the advanced course as an alternative as this will provide you with the most advanced training for each of the major modules.

Freight forwarders course configuration

In addition to following the recommended training needs for function-specific training identified in the IMDG Code there is also a course specific tailored to freight forwarders. In recognising that freight forwarders may have different roles this course identifies the main generic tasks and provides:

- General awareness overview on classification provisions and the nine hazard classes
- Information on competent authority approvals and exemptions
- Detailed overview on labelling and marking provisions for packages and the placarding and marking provisions for CTUs
- General awareness overview on packaging types and provisions
- General awareness overview on stowage requirements
- Detailed overview on segregation requirements
- General awareness overview on emergency response
- Information on use of and packing CTUs

End

If you would like further information and guidance or cannot find the course configuration that meets your organisations' roles and would be interested in looking at tailoring e-learning courses to suit please contact us at imdge-learning@existec.com.